



French Hospital
Medical Center Foundation

A member of CHW

Power of Philanthropy

2010 Annual Report

Welcome

Our second Annual Foundation Report highlights the power of philanthropy in making a difference for others in our community. The stories reflect the passion and commitment of our donors to improve health care access, enhance educational opportunities, provide new technology, and bring new services to our patients. It is the power of philanthropy and the act of giving that can transform lives and move a community to help others in need. We are honored to be the recipients of such generosity and excited about such support of French Hospital Medical Center (FHMC)—your local community hospital.

This past year has seen the creation of two new endowments and support from several private and public grants, as well as donations from many individual donors, employees, physicians and the Volunteer Guild. Existing endowments are also growing. Several significant donations to the endowment that supports the Hearst Cancer Resource Center (HCRC) have helped us reach our four million dollar goal. Examples of these are gifts from the Hearst Foundation, Dr. Michael and Jennifer Clayton and a donor who wishes to remain anonymous. The list includes many other generous donors.

This year, we are embarking on a major capital campaign that will support French Hospital with plans to renovate significant areas of the facility, offer the most advanced technology, and expand needed health care services. The next five years will see an enormous change for the hospital and community health care.

We invite you to join us on this journey, to applaud the generosity of our donors, and pay tribute to the many compassionate caregivers that make French Hospital such a special place.



A handwritten signature in black ink that reads "William A. Thoma".

William A. Thoma
Chairman of the Board
French Hospital Medical Center Foundation



A handwritten signature in black ink that reads "Alan Iftiniuk".

Alan Iftiniuk
President & CEO
French Hospital Medical Center

Our Mission

French Hospital Medical Center is a member of Catholic Healthcare West. We dedicate our resources to delivering compassionate, high-quality, affordable health services, serving and advocating for our sisters and brothers who are poor and disenfranchised, and partnering with others in the community to improve the quality of life.

Our Values

Dignity – Respecting the inherent value and worth of each person.

Collaboration – Working together with people who support common values and vision to achieve shared goals.

Justice – Advocating for social change and acting in ways that promote respect for all persons and demonstrate compassion for our sisters and brothers who are powerless.

Stewardship – Cultivating the resources entrusted to us to promote healing and wholeness.

Excellence – Exceeding expectations through teamwork and innovation.

Our Vision

A vibrant, national health care system known for service, chosen for clinical excellence, standing in partnership with patients, employees and physicians to improve the health of all communities served.

French Hospital Medical Center Leadership 2010–2011

Community Board

Chair

John Dunn

Vice Chair

James Copeland

Secretary

Ann Grant, R.N., Ph.D.

President & CEO

Alan Iftiniuk

Chief of Staff

James Malone, M.D.

Foundation Board Chair

William Thoma

Board Members

Father Russell Brown

Robert Doria, M.D.

Sister Pius Fahlstrom, O.S.F.

Patricia Gomez

Ben Kulick

James Lokey

Richard J. Macias, M.D.

Sandee McLaughlin

Rabbi Norman Mendel

Cornel Morton, Ph.D.

Kerry Pollock

Sister Marianne Rasmussen, O.S.F.

Kevin M. Rice

Sister Jeanne Rollins, O.S.F.

John Ronca Jr.

Mark Soll, M.D.

Ke-Ping Tsao, M.D.

Medical Staff Officers

Chief of Staff

James Malone, M.D.

Vice Chief of Staff

J. Trees Ritter, D.O.

Secretary/Treasurer

Loriana Fletcher, M.D.

Past Chief of Staff

Paul Christensen, M.D.

Foundation Board

Chair

William Thoma

Vice Chair

Sandy Dunn

Secretary/Treasurer

Patrick O'Hara, C.F.P.

President & CEO

Alan Iftiniuk

Chief Financial Officer

Sue Andersen

Executive Director

Debby Nicklas

Community Board Chair

John Dunn

Chief of Staff

James Malone, M.D.

President, Volunteer Guild

Don Aronson

Board Members

Jill Anderson

David Arrona

Greg Bland

Lorraine Cagliero

Reese Davies

Sister Meg Keeler, O.S.F.

Wayne Longcrier, C.P.A.

June McIvor

Leslie McKinley

Nipool Patel

Pierre Rademaker

John Shoals

Wayne Simon

Angela Soll

Erin Steed

Thomas Vendegna, M.D.

Linda Wilson

Honorary Board Members

Louis Tedone, M.D.

John French

HCRC Advisory Committee

Chair

Thomas Vendegna, M.D.

President & CEO

Alan Iftiniuk

Committee Members

Cheryl Cuming

Sandy Dunn

Elaine Gardiner

Stephen Hearst

Stephen Hilty, M.D.

Stephen Holtzman, M.D.

Susan Minker, M.D.

Peaches Olson

Thomas Spillane, M.D.

Hearst Cancer Resource

Center Director

Beverly Kirkhart

Foundation Executive Director

Debby Nicklas

Volunteer Guild Officers

President

Don Aronson

Vice President

Ethel Millar

Secretary

Joyce Cameron

Treasurer

Margie Walters

Past President

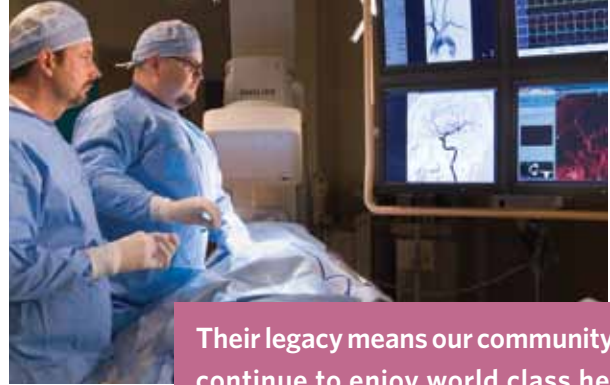
Freda Murphy



Leaving a Legacy for Cardiac Patients

In just over four years, FHMC has established itself as one of the premier cardiac hospitals in the nation. The Copeland, Forbes and Rossi Cardiac Care Center includes the most advanced technology coupled with a top team of cardiac physicians, technicians and nurses providing world class care to our community. FHMC has earned top awards in cardiac care from Thomson Reuters, HealthGrades and Blue Cross, all leading independent health care ratings organizations. Most recently, FHMC was found to be in the top 15% in the nation for providing superior care in cardiology. These distinctions represent the commitment of the hospital and our donors to build a superior cardiac facility so patients receive the best care possible when time is of the essence.

With heart disease remaining the leading cause of death in the United States for both men and women, it is imperative that our community have access to state-of-the-art cardiac care services. This dedication to the future of the Cardiac Care Center at French Hospital led **John and Marcia Lindvall** to establish the Cardiac Care Endowment Fund in December 2009. The endowment will help preserve these quality cardiac services by providing funds to add new technology, maintain existing medical equipment and support operations of the Cardiac Care Center. Their legacy means our community will continue to enjoy world class health care right in our own backyard. The power of philanthropy is at work not only for Central Coast families today but also for the future. Donations to the Endowment Fund are welcomed.



Their legacy means our community will continue to enjoy world class health care right in our own backyard.

To learn how you can create your own **endowment fund** through a bequest or a gift that pays you lifetime income, please contact the Foundation office at 805-542-6496.



James R. Flanagan Educational Advancement Endowment

Jim Flanagan arrived in San Luis Obispo in 1954 following his Army service to attend Cal Poly as an Animal Husbandry major. He later returned to Cal Poly in 1960 as a faculty member in the Animal Science Department teaching equine and beef cattle production over the next 35 years. He retired from Cal Poly in 1995. His commitment to education and experience as a patient at French Hospital recently led him to create



an endowment fund to help bring advanced educational opportunities to nursing and other professional staff.

Jim has been impressed with the recent turnaround at French Hospital and the progress made with the renovations of hospital facilities and numerous new specialized services that are now available under the leadership of Catholic Healthcare West. "In keeping with this progressive theme,

I felt that a program of educational advancement for nursing and other professional staff members would be an appropriate goal for the establishment of an Endowment Fund," says Jim.

With the support of the endowment, educational opportunities will be offered relative to cutting edge programs now surfacing in the industry. Individuals taking advantage of these offerings will be training beyond their current performance level for advancement in their career field and for the betterment of patient care and well-being.

Funding from the endowment will help with speaker fees, curriculum materials, and speaker travel expenses. Funds may also be used to help purchase new equipment to support the learning environment or add new technology for virtual learning experiences in the classroom.

Jim's gift will leave a lasting legacy for many of the staff at French Hospital. His dedication to education and helping others will be instrumental in enhancing health care for our community and beyond.

For others interested in making a difference in educating our local health care professionals, donations to the Endowment Fund are welcomed.

**JIM'S GIFT WILL
LEAVE A LASTING
LEGACY FOR MANY
OF THE STAFF AT
FRENCH HOSPITAL.**



Employee Caring Circle Donations Support New French Bistro Café

Each year, FHMC employees go beyond the call of duty and contribute to the Employee Caring Circle. Since 2005, hundreds of employees have donated more than \$151,000 back to the hospital which they faithfully serve every day. These employees—nurses, physical therapists, food service workers, housekeepers, cardiac technicians, etc.—understand the power of philanthropy and what it can do to enhance the lives of our patients and visitors.

Past support from the Employee Caring Circle has helped create the Healing Garden and Outdoor Fitness Zone. Both projects represent unique ways to bring comfort, healing and strength to our patients, staff, physicians, volunteers and visitors. In 2010, the Employee Caring Circle funded the renovation of the hospital cafeteria. The new French Bistro Café offers a more convenient and enjoyable dining experience. Improvements include stylish interior decorating, a beautiful hand painted wall mural, eco-friendly countertops and low energy lighting. The French Bistro Café also has introduced a new heart healthy menu called “Just for You” featuring menu items that are lower in fat, calories and sodium. Giving through compassion and dedication is the power of philanthropy for these special employee donors.

Marclad Foundation Grant Supports New Center of Osteoporosis

The FHMC Foundation received a grant from the Marclad Foundation in support of a new Osteoporosis Center at the hospital. This center will be the first specialized and centralized center of its kind in San Luis Obispo County, as well as the first center to provide osteoporosis prevention and education services in a setting geared for women and men affected by the disease.

THIS CENTER WILL BE THE FIRST SPECIALIZED AND CENTRALIZED CENTER OF ITS KIND IN SAN LUIS OBISPO COUNTY.

Opening in the fall of 2011, the center will be located in the FHMC Women’s Health and Imaging Center, which currently provides state-of-the-art screening and diagnostic testing including digital mammography, breast MRI, stereotactic biopsy, breast ultrasound, and bone densitometry. The creation of the new Center of Osteoporosis will continue FHMC’s mission as a major provider of health care services to the underserved in San Luis Obispo, which currently offers low-cost and free mammograms to women.

Under the direction of Dr. Mary Oates who specializes in osteoporosis and began a similar program at Marian Medical Center, the Center of Osteoporosis at French Hospital will include a nurse navigator, diagnostic bone mineral density testing, physical therapy, post-fracture osteoporosis management program, a library and resource center, support groups, community lecture series, and free community screenings. This generous grant from the Marclad Foundation demonstrates the power of philanthropy to empower our community to lead healthier lives.

Breastfeeding Clinic Saved by French Hospital

In 2009, due to budget constraints, Community Health Centers of the Central Coast prepared to close the only breastfeeding clinic in the community available to women unable to pay for such services. Congruent with our mission to ensure health care access to all community members, FHMC stepped forward to make sure this vital community service continued. Partnering with San Luis Obispo County and First 5 San Luis Obispo County, FHMC opened a new breastfeeding clinic in San Luis Obispo and provided a lactation consultant to serve four WIC program offices in the County. Through this public private partnership, FHMC has assured access to breastfeeding services to low income and uninsured women throughout the County. Private pay and insured women also have access to these services by appointment. The Clinic is staffed by registered nurses professionally certified in lactation consulting.

Between September 1, 2009 through June 30, 2011 FHMC was awarded \$209,210 in grant funds to support breastfeeding services at the WIC sites. The grant is funded through First 5 San Luis Obispo County and the San Luis Obispo County WIC Program. FHMC also continues to oversee and support the Breastfeeding Warmline which provides free consultation services by phone. The Breastfeeding Warmline was funded by the San Luis Obispo Breastfeeding Resources that closed in 2005.





Angels of Giving: The French Hospital Medical Center Volunteer Guild

At the hospital, you see them everywhere wearing their blue uniforms. Helping discharge patients, greeting you at the front desk, or running special errands for staff, the FHMC volunteers provide countless hours of service that make a difference in the lives of our patients and staff every day.

The Volunteer Guild also runs the hospital gift shop—La French Shoppe. Over the past four years, proceeds from the gift shop have been donated back to the hospital to support many important projects and fund new technology. Total donations equal \$52,200 and have helped fund the remodel of the Chapel, Surgery Waiting Room, Main Lobby, and Cafeteria. Other funds have helped purchase new medical equipment such as a birthing tub and an ultrasound device. These men and women truly represent the definition of dedication and passion for giving back to our community.

THESE MEN AND WOMEN TRULY REPRESENT THE DEFINITION OF DEDICATION AND PASSION FOR GIVING BACK TO OUR COMMUNITY.

Foundation Launches Capital Campaign

FHMC is in the process of transforming its 40 year old facility in order to address the present and future health care needs of our community. The expansion and renovation will dramatically evolve the way health care is delivered by improving the patient experience across the continuum of care, expanding patient capacity, and supporting new services and technologies to meet the ever changing needs of our patients and physicians.

Plans include a new cardiac outpatient suite, a hybrid surgical suite, an expanded/renovated intensive care suite, renovated emergency department, a medical/oncology patient care wing, expanded stroke services, and a new health education pavilion. In addition, the campaign will help grow both the Hearst Cancer Resource Center and the Cardiac Care Endowments.

Our theme is “THE FRENCH CAMPAIGN—Excellence-Innovation-Compassion” recognizing the high quality of care delivered on a daily basis by our compassionate medical team. The campaign leadership includes: Campaign General Co-Chairs—John and Sandy Dunn; Campaign Cabinet Chair—Jim Copeland; Prospect Review Task Force Chair—Bob Wacker; Communications Committee Chair—Ben Kulick; Pacesetter Gifts Chair—Jim Lokey; Major Gifts Chair—Reese Davies; and Physician Gifts Co-Chairs—Drs. Jim Malone and Michael Clayton. We could not have found a more talented and committed group of volunteers to take on the task of raising these funds.

When the need arises, there is nothing more important than access to a strong community hospital. THE FRENCH CAMPAIGN will ensure the best health care now and for years to come for the residents of San Luis Obispo County.

**THE FRENCH
CAMPAIGN**
excellence
innovation
compassion



FHMC Foundation Special Events

Throughout the year, the FHMC Foundation hosts various fundraising events which allow FHMC to reach out to the community and celebrate its donors.



Alan Iftiniuk, Dr. Tedone, Phyllis Madonna, Bill Thoma, John Dunn - Gala '10



Steve Hearst and Emily Flachman - HCRC Event '10



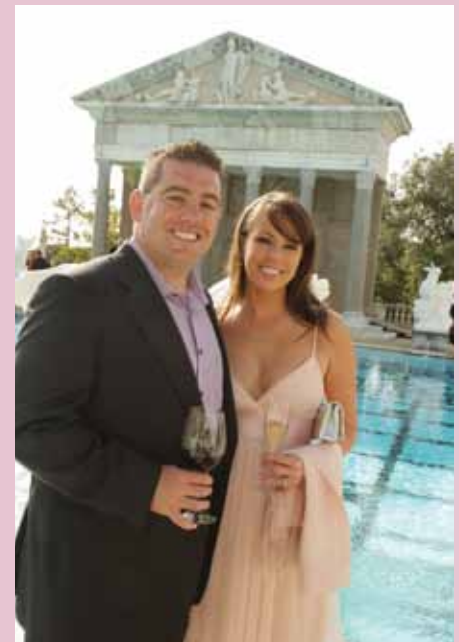
Dr. Ronald and Caroline Rocha - Gala '09



Lena Friedman, Ann Parades, Thalia Hastings, Carrie Lee - French Cup '10



Paul and Lucia Vanderheyden, Dr. Pedersen - Gala '09



Aaron and Erin Steed - HCRC Event '10



R.E. Wacker Associates - French Cup '10



Jim Gardiner, Peaches Olson, Elaine Gardiner - HCRC Event '10



Sandy and John Dunn - Gala '10



Dr. Thomas Vendegna, Peaches Olson, Alan Iftiniuk, Pepper O'Shaughnessy, Steve Hearst - HCRC Event '10



FHMC Foundation Financials for the year ending June 30, 2010

	Unrestricted	Temporarily Restricted	Permanently Restricted	Total
Revenue				
Gifts, Grants and Bequests	\$120,740	\$ 407,433	\$1,566,717	\$ 2,094,890
Investment and Other Income	\$13,288	\$ 81,882	—	\$ 95,170
Total Revenue	\$134,028	\$ 489,315	\$1,566,717	\$ 2,190,060
Expense				
General and Administrative	\$ 233,622	—	—	\$ 233,622
Fund Raising	\$154,751	—	—	\$154,751
Total Expense	\$ 388,373	—	—	\$ 388,373*
Excess of Revenue Over Expenses	\$ (254,345)	\$ 489,315	\$1,566,717	\$ 1,801,687
Fund Distributions				
Grants to Medical Center	\$121,628	\$ 280,727	—	\$ 402,355
Net Increase in Fund Balance	\$12,402	\$ 40,897	\$1,582,967	\$1,636,266
Fund Balance 6/30/08	\$ 948,481	\$1,514,499	\$1,159,690	\$ 3,622,670
Fund Balance 6/30/10	\$ 960,883	\$1,555,396	\$ 2,742,657	\$ 5,258,936

*Foundation expenses are supported by French Hospital. Therefore, 100% of a donation is directed specifically to the donor's wishes.

Foundation Grants to French Hospital Medical Center for Programs, Services, and Capital Equipment from July 1, 2009 to December 31, 2010.

<p>Hearst Cancer Resource Center Foundation funds were granted to the HCRC for the design and construction of the cancer resource center and to support ongoing operating expenses. The HCRC provides a broad spectrum of free supportive resources to cancer patients in San Luis Obispo County.</p>	\$476,838
<p>Interventional Radiology With a grant from the George Hoag Family Foundation, FHMC is now equipped with the IG4, a new "GPS" navigation system. FHMC is one of the first hospitals in the Western states to utilize this important emerging technology. It is used by interventional radiologists as a needle-based tool tracking system, similar to GPS, to navigate within organs during procedures using a roadmap CT scan.</p>	\$80,000
<p>Cardiac Center The Foundation granted funds to purchase a Thermogard XP Core Management System to provide precise control of core body temperature more effectively and efficiently than conventional external methods. This new technology is used for cardiac and stroke patients.</p>	\$40,815
<p>Caring Circle Donor Wall Foundation funds supported the design and construction of a new donor wall in the main lobby of the hospital.</p>	\$25,000
<p>Surgery Waiting Room A Volunteer Guild donation provided funding for the renovation of the Surgery Waiting Area to provide greater comfort and convenience for patient families.</p>	\$15,000
<p>Outpatient Surgery The Nursing Department received funds to purchase a new ultrasound device for placement of central venous catheters through a donation from the Volunteer Guild.</p>	\$13,000
<p>Emergency Department The Foundation granted funds to purchase an AccuVein Viewing System and Rapid Fluid Warmer for the Emergency Department.</p>	\$12,594
<p>Main Hospital Lobby Renovation The Foundation granted funds to the hospital to help with the lobby renovation from Volunteer Guild donations.</p>	\$11,800
<p>Energy Efficient Lightbulbs PG&E provided grant funds to support the hospital's replacement of energy efficient light bulbs.</p>	\$5,000
<p>Nursing Education The Foundation granted funds to purchase a teaching defibrillator for the Nursing Education Department.</p>	\$3,418
<p>Mammography Testing The Foundation granted funds to support free mammography screenings to women unable to afford this life saving test.</p>	\$336
TOTAL	\$683,801

The FHMC Foundation Caring Circle of Donors supports a wide variety of hospital programs. It is our pleasure to recognize and celebrate the generosity of those donors who have invested in their community hospital.

French Hospital Medical Center Caring Circle of Donors

Circle of Excellence

Anonymous
Anonymous
William Randolph Hearst Foundation

Circle of Stewardship

James & Sandra Copeland
Thomas & Pamela Copeland
Bert & Candace Forbes
John & Marcia Lindvall
The Rossi Family

President's Circle

Dr. Sanjay & Smita Ganpule
Ben Kulick

Circle of Justice

County of San Luis Obispo
George Randolph Hearst, Jr.
Cydney & Reed Holcomb
The Sargen Family

Circle of Collaboration

Central Coast Wine Classic
Michael Clayton, M.D. & Jennifer Clayton
James R. Flanagan
French Hospital Medical Center
Volunteer Guild
George Hoag Family Foundation
The Marclad Foundation
The Medical Staff of French Hospital
Medical Center

Circle of Dignity

Bank of America
Roy & Jane Gersten
Stephen Hearst
Erin Hearst Knudsen

Circle of Compassion

Anissa Balson
Colonel Retired Oscar & Jeanne Bayer
Nanci Bell & Family
California Emergency Physicians
Dan & Haleh Farnum
Tom & Linda Grissom
Alan & Cathleen Iftiniuk
The Keller Family
Allen & Susan Minker
Pacific Gas & Electric Company
Mike & DD (D'Elaine) Patrick
PUMA Aquatic Swim Team
Rabobank
Radiology Associates of San Luis Obispo
San Luis Obispo Breastfeeding Resources
Jim & Debi Saunders Family
B.K. Simon Family Charitable Foundation
Dr. Jonathan & Kelly Stella
The Thille Family
Bill & Ed Thoma | Thoma Electric
R.E. Wacker Associates

Circle of Healing

American Charros Association
Sue & Steve Andersen
Bill & Nora Bolthouse
Carol Brown
Roman Bukachevsky, M.D. & Anne Yarema
Coral J. Corsaut
Founders Community Bank
Carol S. Judd & Family
Wayne & Kathy Longcrier
Jim Malone, M.D. & Jessica Malone, N.P.
Steve & Debby Nicklas
Neva Orton
San Luis Obispo County
Community Foundation
Ventura County Public Health Department
Thomas Vendegna, M.D. & Gayle Cekada,
M.D. & Friends
Susan L. Vincent
Bob & Debbie Wacker

Business Partners in Health

American Perspective Bank
Bank of America
Cannon Associates
Copelands' Properties
Digital West Networks
First Bank of San Luis Obispo
Heritage Oaks Bank
Frank & Betsey Kelton
Meathead Movers
Gregory Morris
Pacific Gas & Electric Company
Rabobank
Secure Horizons
Rossi Enterprises
San Luis Sports Therapy
Studio Design Group
Thoma Electric
Triam Investments
Ke-Ping Tsao, M.D.
Verdin Marketing Ink

Capital Fund

Leadership Gifts

Anonymous
Anonymous
David M. Arrona
Greg Bland
John & Sandy Dunn
Patricia Gomez & Frank Seiple
Alan & Cathleen Iftiniuk
Wayne & Kathy Longcrier
June Mclvor & Duane Hall
Leslie McKinley & Gary Enoch
Santee L. McLaughlin
Debby & Steve Nicklas
Patrick & Christy O'Hara

Pierre & Terri Rademaker
Mr. & Mrs. Kevin M. Rice
Thoma Electric

In honor of Pearl M. & Clarence (Bud) W. Thoma
Su & Ke-Ping Tsao, M.D.

Annual Fund

Alfredo Aguilera
George Alers
William & Patricia Alex
Ira & Marsha Alpert
Allyn & Concettina Arnold
Brian & Valerie Bailey
Ron Barbieri, D.D.S.
Gilbert & Mary Barrios
Eugene & Lorraine Battjer
David Beard
Robert & Alese Bell
Allen & Mary Ellen Benson
Larry & Karla Bittner
Brian & Elizabeth Blakely
Walter & Alice Blankenship
The Boaz Family
Eric & Melinda Bollinger
Robert & Eleanor Bond
Enrico & Ines Bongio
Dorothy Briley
James & Mary Brinkley
David Brodie
David & Rosemarie Brooks
Lucille Brughelli
Lorraine Cagliero
Dyer & Sheila Campbell
Joseph & Genevieve Campbell
Byron & Maxine Canvasser
Roger & Susan Card
Joseph & Mary Louise Cardoza
William & Judith Carlson
Roberta Carnes
James & Felicia Cashin
Arthur & Susan Chippendale
The Claassen Family Trust
Rosemary Cleaves
Joel Conn
James & Sandra Copeland
John & Jo Ann Costa
James & Shannon Cox
Clifford & Ruth Cunha
Todd Curtis
Robert & Kathryn Dabelow
Burke & Rena Dambly
La Verne Daniels
Richard & Diane Dannells
Nick & Viivi Darden
Pamela Dassenko, D.D.S.
John De Vries
Phillip Dillon
Frank & Belia Dominguez
Everette & Barbara Dority

Jitendra & Hansa Doshi
 Evadene Dotson
 Eugene & Rosalie Dowty
 Rosalie Dowty
 Edward & Genelle Du Mond
 John & Sandy Dunn
 David Elam
 Wallace English
 Thomas Exley
 Gerald Farrell Jr.
 Elon Faulknham
 Thomas & Ruth Fetterman
 Howard Figler
 Harold & Carol Fine
 William & Nancy Flanders
 Jane Ford
 Kathleen Forgie
 John Foundos & Marguerite Bader
 Janet Frame
 Gerald & Daphne Freedman
 R. Karl French & June Finn
 French Hospital Medical Center
 Volunteer Guild
 Barbara Fullerton
 Walter & Mary Ann Gaines
 Jim & Elaine Gardiner
 Ronald Gaston
 Pamela Gatz
 Douglas Geneux
 James Gentilcore
 Jack Giroud
 Al & Rosa Goldwyn
 Patricia Gomez & Frank Seiple
 John & Margaret Gonzales
 David Goodhue
 Dian Gran
 Andrew & Jean Greensfelder
 George & Rita Gruner
 Michael Gruwell
 Ray Guillen
 Kristen Haines
 Rich Harringer
 Nicholas & Patricia Harvanovich
 Norman Hawthorne
 Gail Hermreck
 Patrick Hickey, Sr.
 Calvin & Carney Hoffman
 Robert & Christine Hoover
 Mr. & Mrs. W. L. Huntington
 Francis Hustead
 Alan & Cathleen Iftiniuk
 Marion & Seirin Ikeda
 James & Perry Jamieson
 Warren Jensen
 Robert S. Johnson, M.D.
 Roy & Jean Jones
 Stanley & Vera Kay
 Deborah Kempton
 Betty Kennedy
 James & Cynthia Killackey
 Thomas Kobayashi
 Lydia Kostyzak
 Rose Marie Kuznik
 Matthew Lacy
 H. W. Lagerquist & D. C. Lagerquist
 Jack & Elaine LaLanne
 Mike Lawler
 J. & E. Levy
 John Lewis

Cecile Ley
 Bob & Louisa Lindquist
 James Lokey
 Wayne & Kathy Longcrier
 Yuriko Lopez
 Jeannie Love
 Vereeta Lucietta
 Helen Lyons
 J. A. Mac Lardie
 Joseph Madero
 Samuel Maksoudian
 Mary Malotte
 Cori Marsalek
 Edith McCoy
 David McCulloch
 Leslie McKinley & Gary Enoch
 Mildred McVicker
 Elmer Meier
 Peggy Mesler
 Michael's Communications Services
 Bruce & Joan Milbrath
 Marcie Milligan
 Grace Mitchell
 Robert Mitton & Mimi Vandermolen
 Marilyn Moore
 William Moore
 Gregory Morris
 Carol Moss
 The Munns Family
 E. J. Munns
 Donna Murphy
 Henry Myers
 Ibrahim & Batoul Naccasha
 National Association of Social Workers, Inc.
 Steve & Debby Nicklas
 Barney & Gloria Northcote
 Alberto & Eva Ochoa
 Allen Olivares
 Dattatraya & Anuradha Paranjpe
 Barbara Parsons
 Robert Patton
 Jennifer Pearson
 Lawrence & Beth Peterson
 Carl & Zita Pimentel
 Benjamin & Roslyn Pollard
 Virginia Powell
 Peter & Christine Presnal
 Durward Priebe
 Don & Linda Pruitt
 Patricia Puccini
 Dr. David & Tania Puro
 Pierre & Terri Rademaker
 Martin & Joan Rafter
 Sheldon Rashba, M.D.
 Bernice Raymond
 Charles Reagan, Jr.
 Terence Redknapp
 Dan Rhodes & Janet Fillmore
 Frances Rice
 Kevin M. & Kitty Rice
 Anna Ristelhueber
 Scott & Jane Robinson
 Ben & Lavonne Rodgers
 Jesus Salinas Rodriguez
 Roy Rodriguez
 John Ronca Jr.
 Calvin Rumbaugh
 Roger Carruthers & Phyllis Salyer Carruthers
 Mark Sarrow

Henry Schaufus
 Jerry & Kim Scott
 John & Kathryn Scully
 Frank & Shirley Sevastacis
 Ruth Sheffer
 Ellen Sheldon
 John Shoals
 Gary Simer
 James & Janice Smith
 John Smith
 Norman Sobraske
 Dr. Mark & Angela Soll
 Linda Spengler
 Barbara Spry
 Robert & Lois Stratton
 John & Elsie Strimpel
 Alpha & Mary Takagi
 Louis Tedone, M.D.
 Nick & Darcie Thille
 Thoma Electric
 Alan Thomas
 Loyce & Norma Tobler
 Joseph Tondre
 Charles Trujillo, Sr.
 Dr. Ke-Ping & Su Tsao
 William & Mary Ann Tuck
 Paul & Jessie Tuttle
 Anthony Vallone
 Mathilde Van Zeverter
 Bonnie Vastbinder
 Winton & Joan Victor
 Melton & Margaret Wann
 Virginia Ward
 Joyce Weiss
 Roger Welles
 Patrick & JoAnn Wheatley
 Robert & Claire Wiley
 Charles & Norma Wilkerson
 Olga Wolf
 Joan Wood
 Drs. Tom & Muriel Wright
 Eugene & Deanna Xavier
 William & Donna Yaw

Annual Fund Tributes

In honor of Larry Baldwin
 The Marclad Foundation
 In honor of Rowena C. Boyle
 Ann Grant, R.N., Ph.D.
 In honor of Carol Brown
 Richard & Shirley Grant
 Robert & Laura Morse
 In honor of Dr. Paul Christensen
 Doris Artz
 In honor of Jim & Sandy Copeland
 Suzanne Fryer
 In recognition of the Emergency Department
 Ruth Frizzell
 In honor of Don and Carole Enneking
 Susan Vincent
 In honor of Dr. Luke Faber
 Lorraine Wagner
 Joyce Whiteing
 In honor of Sister Pius Fahlstrom, O.S.F.
 James & Sandra Copeland
 In honor of Dr. Michael Famularo
 John & Frances Budlong
 Bill & Patsy Dorough

In honor of Julia Fogelson
California Emergency Physicians

In honor of Dr. George French
Kenneth & Jeanne Miller

In honor of Dr. Stephen Freyaldenhoven
Joyce Whiteing

In honor of Barbara George
Nella Girola

In honor of Matthew Haas
Maria Jackson

In honor of Dr. Stephen Hilty
Paul & Marion Wolff

In honor of Alan Iftiniuk
Rabbi Norman & Heather Mendel

In honor of Dr. David Javitz
Charles & Louise Windisch

In honor of Dr. Spencer Kulick
Dian Gran

In honor of Dr. James McDonnell
Joseph Henson, Jr.

In honor of Carroll & Lynn McKibbin
Maria Jackson

In honor of Patti Moerman
Dewaine's Crane

In honor of Pearl Harbor Veterans
William Smicenski

In honor of Dr. Boris Pilch
Judith O'Halloran-Rosen

In honor of Sister Marianne Rasmussen, O.S.F.
James & Sandra Copeland

In honor of Sister Jeanne Rollins, O.S.F.
James & Sandra Copeland

In honor of Jane Spellacy
Maria Jackson

In honor of Maggie St. Vincent, R.N.
Elon Faulkham

In honor of Bill Trussler
Ronald & Iris Gould

In honor of Dr. Ke-Ping Tsao
Sister Pius Fahlstrom, O.S.F.

In honor of Jean D. Wysock
Melvin Wysock

In memory of Buelah Anderson
Bruce Abrahamson

In memory of Susan J. Barks
Jeanne Barks

In memory of Ernie Berg
Frank Martinez

In memory of Eleanor S. Castro Muñoz
Cindy Muñoz

In memory of Clinton Cates
Roberta Cates

In memory of Connie Coolbaugh
Nick & Darcie Thille

In memory of Chris Deckard
William Savage

In memory of Elinore M. Dillen
William Dillen

In memory of Edison French
Kenneth & Jeanne Miller

In memory of Juanita Gaoiran
Kathryn Bartlett

In memory of Marilyn Gipson
Dr. Richard & Alta Jean Paul

In memory of Carol Hoeschen
Betty Nelson

In memory of Patricia Koehler
Audrey Johns
David & Jacqueline Vaughn

In memory of David Krueger
Leslie McKinley

In memory of Robert "Bob" Lee
Sylvia June Lee

In memory of Alma Wacker Leffler
Lorraine Cagliero
Janet Carpenter
Mollie Devine
John & Sandy Dunn
Robert & Frankie Jo Ellis
Five States Energy Company, LLC
Robert & Jean Gandy
Jim & Elaine Gardiner
David & Barbara George
Albert & Edithe Haener
James & Phyllis Harwell
J.C. Enterprises
Arthur & Marilyn Johnson
Kathleen Long-Norris, M.D.
Bess Lyon
The Manse on Marsh
George & Brenda Nichols
Steve & Debby Nicklas
Patrick & Christy O'Hara
Jillian Pearson
Kristen Reeves
Mary E. Rizzoli
Daniel & Mary Rose
Rotary Club of San Luis Obispo Charities
David & Linda Ruitenberg
Louis & Laurie Salazar
Louis Tedone, M.D.
Steven & Sherri Weiss
Matthew & Susan Wilson

In memory of Roger Lyon
Frank Heckl & Vicki Perrigo

In memory of Lois Martinez
Frank Martinez

In memory of Betty R. Mattocks
George S. Mattocks

In memory of Robert May
Chris Anderson
Erikamai Barnes
Gregory & Vickie Bryant
Charles & Maggie St. Vincent
Jimmy Tsoi

In memory of Brian Murphy
Joyce Cameron
Steve & Debby Nicklas

In memory of Christine Niland
Jeff Bringle
Edward & Jeanne Hertel
Jacqueline Hofmeister
Robert & Phyllis Hux
Frank & Betsey Kelton
James & Arlene Lau
Eugene & Donna Mayer
G.T. & Tonny Murray
Mary E. Rizzoli
Mary F. Rizzoli
Harry Shlaudeman
The Hargan Family Trust
Don & Susan Tison

In memory of Christine & Eric Niland
Barry & Brenda Karleskint
Byron & Diane Morris

In memory of Shirley Oliver
Wilbern Oliver

In memory of Greg Otto
Katherine Otto-Howard

In memory of Jon Patterson
Ray & Pat Scott

In memory of Karl G. Petersen
Mary Petersen

In memory of Loni Phillips
Tony Torres & Vera Leigan

In memory of Amelia Poletti
Thomas & Catherine Sherman

In memory of Mary Rossi
John & Sandy Dunn
Dave & Sandy Garth
Alan & Cathleen Iftiniuk
Frank & Betsey Kelton
Steve & Debby Nicklas
Studio Design Group
William & Cheryl Swanson

In memory of Marvin Soll
Dolores Soll

In memory of George Trager
Geraldine Trager

In memory of Lian Tsao
James & Gail Anastasio
Asian American Government
Executives Network
Dr. David & Joanne Canvasser
Rosemary Cleaves
Lucy Dobson
John & Sandy Dunn
Andrea Elliott
Margaret Farr
Brian & Carol Fischer
Luigi Gallo
Jim & Elaine Gardiner
David & Barbara George
Maronee Hollister
Eu-Phang Hsu & Chih Hus
Lucy Hwa
James & Esther Landreth
Steve & Debby Nicklas
Annabelle Redell
Ann Wang
Yuen Fung Chu Wang
Tracy & Barbara Wilder
Deanie Wu

In memory of Allan Voigt
John Bruno
Tony Torres & Vera Leigan

In memory of Jacquelyn Vreeland
Edward & Jacquelyn Vreeland

In memory of Bob Wheat
Charlie Ault

In memory of Patrick Wheatley, Jr.
Patrick & JoAnn Wheatley

Breastfeeding Clinic

Jennifer & Chris Barber
Tessa & Ryan Betz
Alisa & Michael Bleske
Katie Buell
Nicole Combs
County of San Luis Obispo
Sheryl Cowan
Stephanie & Josh Cwikla
Sofia Gelpi
Kelly & Brian Gleason
Amy & Steven Holder

Jamie Knupp
Anita Konopa
Yvonne Lara
Mary Lister
Martina Marquart
Krista Martin
Flor & Patrick Mason
Meagan & Dylan McDonald
Ashlee & Jason McNutt
Eva Nappier
Erin & Kyle Newman
Melissa O'Neal
Lindsay Pera
Lindsey Plamerston
Jill Richards
Diana Justin Rodgers
Virginia Roof
Laura Salgado
Penelope Schwartz
Stacey Stefancich
Michelle Sullivan
Callie Taylor
Amanda Thompson
Teresa & Robert Tibstra
Rosalinda Valdez
Carrie White
Melissa Wilson
Sandy & Camden Wirick
Heidi Wolff & Kaigo Hwang
Monica Woodside

Cardiac Fund

Jason & Abigail Cross
Earl Higbee
George Hoag Family Foundation
Carol S. Judd
John & Marcia Lindvall
Richard Macias, M.D.
Rob & Laurie Rossi
James Sargen

Cardiac Fund Tributes

In honor of Jim & Sandy Copeland and
Tom & Pam Copeland
Ruthanne Chapman & Robert Porter
In memory of Allan Voigt
Vincent Carlone
John & Yvonne Edmisten
Patricia McNamara
Sofia Schleicher
In memory of Mary Rossi
Copelands' Properties, LLC
John & Kathy Rossetti

Energy Conservation Fund

Pacific Gas & Electric Company

Education Fund

Boston Scientific
County of San Luis Obispo
Medtronic, Inc.
San Luis Obispo County
Community Foundation
Patty Shipsey

St. Jude Medical
Robert & Jill Urmey
Ventura County Public Health Department

Emergency Preparedness Fund

Colleen Avery

Employee Caring Circle

Margarita Aguilar
Sue Andersen
Manuel Chris Arevalo
Sam Argentieri
Joe Armstrong
Charlie Ault
Colleen Avery
Brad Benko
Lisa Bergman
Gayle Billington
Gregory Blishak
Carol Brown
Ruby Burke
Sharla Cannon
Marcus Carnohan
Ann Carpenter
Marjorie Carroll
Leonardo Casabar
Raquel Coronado
Abby Cross
Karen D'Autremont
Kirsten Davis
Christina Diederich
Cheryl Diefenderfer-Edwards
Deanna Donnelly
Barbara Dyer
Dan Farnum
Paul Flaherty
Christine Flores
Julia Fogelson
Lisa French
Michelle Friedman
Martha Fuerte
Michael Galamay
John Gardner
Denise Gimbel
Robert Gordon
Michelle Gracia
Ashley Gray
Rick Grossman
April Grover
Jeremy Guerra
Young Hartland
Nancy Hayes
Amy Herlihy
Anna Herlihy
Eloy Hernandez
Ashley Hickey
Janet Hofmeister
Maronee Hollister
Sheila Hoover
Ken Hritz
Alan Iftiniuk
Matthew Jacobs
David Jeffrey
David Jones
Vanessa Kay
Eugene Keller, M.D.
Sharon Kerns

Tina Ketchum
John Kipp
Beverly Kirkhart
Robyn Kontra
Carol Kucer
Margaret Kupsik
Debbie Lacillade
Gina Lane
Cindy Lang
Micki Leister
Bianca Lin
Mary Lisenby
Scott Livingstone
Emerald Llamas
Pamyla Lytle
Michalyn Maddelein
Karen Madrid
Jane Mallett
Edith Martin
Jeanne Martin
Daniel Martinez
Sandra Martinez
Christian Milian
Betty Mills
Holly Mintun
Clarence Mitchell
Barbara Neal
Christine Nicholson
Jennifer Nicholson
Debbie Nicklas
James Nucci
James Paulsen
Joe Paz
Cindy Phillips
Tina Pineda
Jennifer Plain
Debbie Plemmons
Erin Quaresma
Kimberly Ray
Jean Raymond
Carol Reynders
Carol Rockholt
Jeanl Rollins
Dan Salyer
Kerry Sanner
Lori Shields
Susan Simpkins
Paula Smith
Robyn Soto
Helen Stecker
Barbara Stenber
Lori Stollmeyer
Patricia Suffia
Charles Tagawa
Delmer Teel
James Tennes
Patricia Thomas
William Tillery
Karen Trask
Jimmy Tsoi
Adrienne Tuttle
Jamie Upton
Ricardo Uriarte
Kelli Vanderhoof
Kelli Walters
Ken Ward
Drew Washer
Neal Webb
Deborah Wettlaufer
James Wheat

Carrie White
Evelyn Wilkie
Jessica Wilson
Marcelee Winkler
Susan Winsell
Karen Wong
Barbara Yankowski
Kathleen Yeung
Amy Yost

Family Birthing Center

Armando & Karin Gonzalez
In honor of Siena Paige Gonzalez
Andrew & Juliette Sherman
In honor of Jillian Rae Sherman
Mario & Linda Juarez
In honor of Daniel Matthew Juarez
Dr. Scott & Dana Robertson
In honor of Jocelyn Reese Robertson
Kyle & Amby Ronemus
In honor of Thor Robert Ronemus

Healing Garden

In memory of Vicki Brown
Anonymous
In memory of Martin "Budd" Simon
The Glickman-Simon Family
The Nicklas Family
In memory of Dr. Nancy Speed
Sue Andersen
Debby Nicklas
Linda Riggle
Joseph Schwartz, M.D.
Susan Winsell
In memory of Sophie Vanderzwaag
Jessica Otlar

Hearst Cancer Resource Center

American Association of University
Women – San Luis Obispo Branch
Anonymous
Rodney Babcock
Bank Of America
Retired Colonel Oscar & Jeanne Bayer
Lawrence Bonner
Carol Brown
Maureen Clancy
Coral Corsaut
Ray & Sandra Crosno
Rose Duarte
Carl & Robin Dudley
Michael & Marilyn Dwiggin
Joseph Erwin
Stephanie Ewan
James R. Flanagan
Dr. Sanjay & Smita Ganpule
Rebecca Garcia
William & Karen Graham
Hearst Ranch Winery
Stephen Hearst
Gail Hermreck
Cydney & Reed Holcomb
Elaine Holder
Maronee Hollister
Kenneth & Bonnie Hritz

Stanley & Vera Kay
Kids 4 Kures
Robyn Kontra
Duane & Ann Leonard
Peggy Little
Kimberly Luker
Elida Moore
Nipomo High School – Hoops for Hope
Paul & Betty Olson
David & Leigh Ormonde
Susan Piel
PUMA Aquatic Swim Team
Kris Ramirez
Danita Ross
Rob & Laurie Rossi
Patty Shipsey
Thomas Spillane, M.D. & Karen Allen, M.D.
Spirit Winds Therapy
Gary Teixeira
Sam Toh
Donna Toth
Carolyn Warmington
Jay Wiese

Hearst Cancer Resource Center Tributes

In honor of Greg "Coach" Cebulla
David Cebulla
In honor of Lucy DeSantis
Maria Jackson
In honor of Mary Guyette
Don Mueller
In honor of Matthew Haas
Maria Jackson
In honor of Steve Hearst and the Hearst
Family generosity
Martin S. Morehart
In honor of Carroll & Lynn McKibbin
Maria Jackson
In honor of Jesse Norris' wedding
Jim & Elaine Gardiner
In honor of Frances Palmtag
Jeffrey & Nancy Joynt
In honor of Dr. Thomas Spillane
Martin & Denise Indvik
Henry & Lauryn Niezen
In honor of the Staff of the Hearst Cancer
Resource Center
Jim & Elaine Gardiner
In honor of Dr. Thomas Vendegna
John Cekada
In honor of Dr. Deborah Villa
Maria Jackson
In honor of Joyce Walters
Robert Walters
In honor of Margie Walters
Robert Walters
In memory of Mary Barth
Jeffrey & Nancy Joynt
In memory of Dr. Michele Body
Cheryl Gregory
In memory of Dora Carpenter
Maria Jackson
In memory of Marilyn Gipson
James & Joyce Matthews
Robert & Karen Miller
Dr. Richard & Alta Jean Paul

In memory of Carol Ann Hoeschen
Lee Auerbach
Craig & Laura Bente
Roger & Marge Castle
Jeff Clark
Patrick Hoeschen
James & Theresa Larson
John Larson
Linda Murrin
Jan Surbey
In memory of Dr. Karl Kinschner
John & Yvonne Edmisten
In memory of David Krueger
Dale Wold & Kathryn Bay
Mark Cresswell
Joanne Krueger
Edmund & Bernadette Kurtz
Paul Lawrey
New Life Community Church of the Nazarene
Gregory Opper
Teixeira Farms Inc
In memory of Alma Wacker Leffler
Barney & Linda Reitner
In memory of Jean L. Moran
Michael Moran
In memory of Sallie Nadal
Robert & Joan Field
In memory of Frank O'Connor
Lillian Aping
Wai Quon & LeRoy Aping
Suzanne Brown & Alan Herboldsheimer
Harold Creasey
Leslie Iseke & Donald Ho
Lowell & Rita King
Mr. & Mrs. Henry Lau
Bill & Jeannie Marcum
Sally Miyashiro
Steve Miyashiro
Richard Spiker & Mary Patricia
David & Carole Sternberg
Emily Tamanaha
Joyce Vargas
In memory of Carol O'Daniels
Felton Ferrini
Merlin Meyer
Pi Kappa Alpha Fraternity
Mary Ann Reiss
Richard Romo
Howard & Charlotte Weinberg
In memory of Bruce Onato
Maria Jackson
In memory of Isabel Ruiz
Charlie Ault
Steve & Debby Nicklas
In memory of Angela Tonic
Jeremy & Kathy Bond
In memory of Dee Underwood
Margaret Underwood
In memory of Margaret Underwood
David & Linda Lawler
Janice Lee
Jean Martin
Patricia Varnum
Dorothy Westerfield
In memory of John Verdin
Stella Jenkins
Steve & Debby Nicklas
Steve Reich
Souza Food Service Inc.

Monique Verdin
 Douglas & Julie Wagnon
 Terry Westrope
 In memory of Thomas Vowell
 Ken Olson

Mammography Screening Outreach Fund

Jeffrey Amado
 American Perspective Bank
 David Arrona
 Rudy & Melissa Bachmann
 Carol Brown
 Lorraine Cagliero
 Manya Choboian
 Dr. Michael & Jennifer Clayton
 Reese Davies & Vicki Mazzei
 Sandra Duerr
 John & Sandy Dunn
 Dave & Sandy Garth
 Brian & Alice Ann Hermanson
 Jay Hieatt
 Jim & Cheri Humphrey
 Alan & Cathleen Iftiniuk
 Vanessa Kay
 Bob & Carol Kerwin
 Carol Kiessig
 Kathy Kimball
 Tim & Debbie Kopack
 Nir Lorant, M.D.
 John Madonna
 Kevin & Kathi Main
 Dr. James & Jessica Malone
 June McIvor & Duane Hall
 Rabbi Norm & Heather Mendel
 Steve & Debby Nicklas
 Patrick & Christy O'Hara
 Rob & Peaches Olson
 Ian & Amy Parkinson
 Kevin M. & Kitty Rice
 Stan Shaner
 Annie Shanks
 Lori Shields & Zach Williams
 Dr. Mark & Angela Soll
 Aaron & Erin Steed
 Marisa Teel
 Bill & Jennifer Thoma
 Jon P. Treder
 Jeanette Trompeter
 Dr. Ke-Ping & Su Tsao
 Cathi & Rowly Twisselman
 Christian Voge, M.D.
 Bonnie Werling
 Mike & Linda Wilson

Osteoporosis Fund

Jan Spano
 The Marclad Foundation

Women's Diagnostic Outreach Fund

Retired Colonel Oscar & Jeanne Bayer

Women's Imaging Center

Richard Macias, M.D.
 Michael & D'Elaine Patrick

Names reflect donations received from July 2009 - December 2010

Louis Tedone, M.D. Humanitarian Award

The highlight of FHMC's Annual Gala is the presentation of the Louis Tedone, M.D. Humanitarian Award. The award honors the legacy of Dr. Tedone and his concern and caring for children in our community, and was established to recognize the extraordinary contributions of those like him, dedicated to building healthier communities.

The Louis Tedone, M.D. Humanitarian Award is presented to individuals who have had a lifetime dedication to the health and well-being of the San Luis Obispo community. These remarkable people, through their professional career or volunteerism, humility and kindness, seek to improve the delivery of health care for all in our community.

Past Humanitarian Award Winners

2006	Louis Tedone, M.D.
2007	Rob Rossi and Ke-Ping Tsao, M.D.
2008	Stephen Hearst
2009	Jac Pederson, D.D.S.
2010	Phyllis Madonna



Dr. Tedone, Dr. Pedersen



John Dunn, Phyllis Madonna, Bill Thoma



Rob Rossi, Dr. Tedone, Dr. Pedersen, Phyllis Madonna, Dr. Tsao



French Hospital Medical Center Foundation

A member of CHW

French Hospital Medical Center Foundation
1911 Johnson Avenue
San Luis Obispo, CA 93401